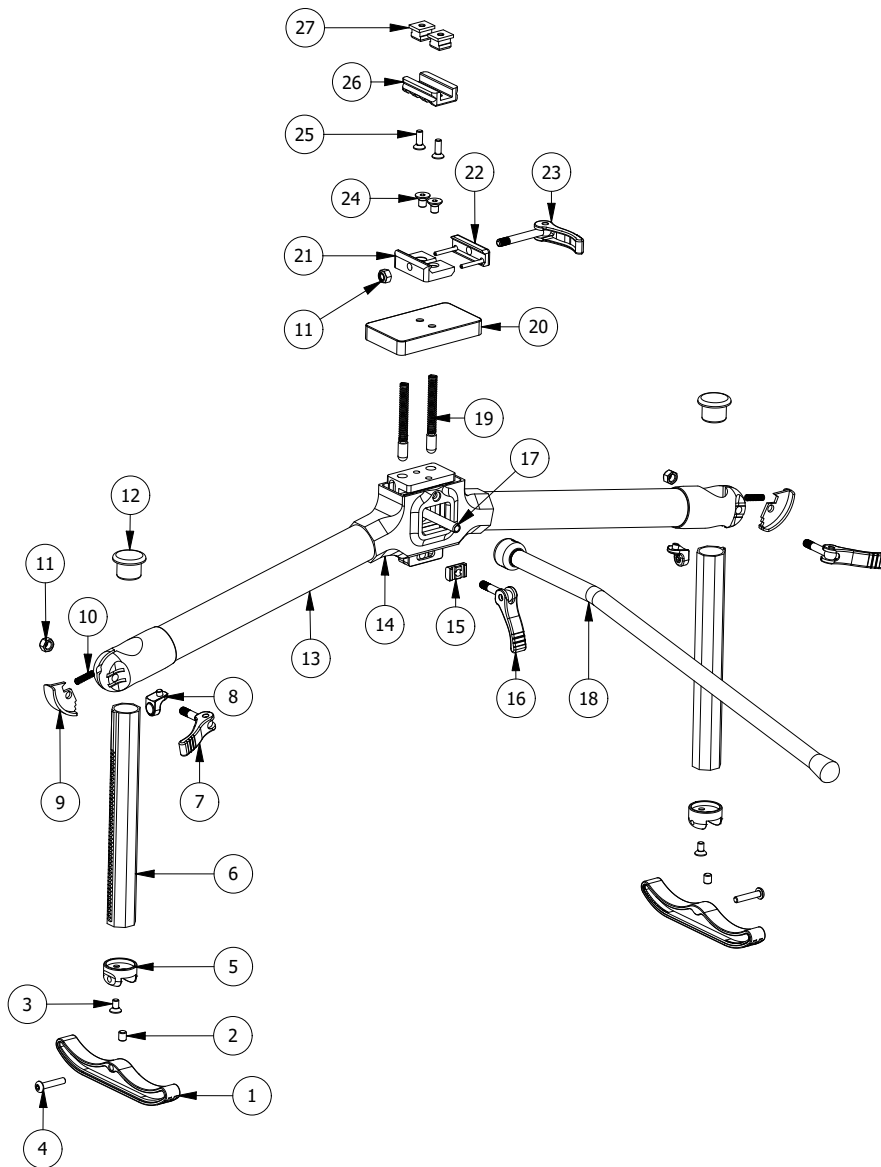


JOYPOD-X

EXPLODED DRAWING



PARTS LIST	
ITEM	PART NAME
1	Pivotal Foot
2	Set Screw M5 x 6
3	Countersink Screw M4 x 8
4	Crossbolt M4 x 20
5	Connecting Piece
6	Vertical Leg
7	Quick Lever Screw (Adjustable)
8	Vertical Leg Brake
9	Ratchet Piece
10	Coil Spring D4 x 15
11	Nylock Nut w/ Nylon Insert
12	Top End Cap (Removable)
13	Alum Arm 1"
14	Coaxial Unit
15	Canting Lock Adaptor
16	Canting Lock (Adjustable)
17	Center Shaft
18	Joystick w/ Collet Head
19	Up-lift Coil Spring
20	Top Cover Plate
21	Picatinny Base
22	Retainer Plate
23	Quick Detach Lever (Removable)
24	Countersink Screw M5 x 8
25	Countersink Screw M4 x 12
26	Picatinny Piece / Adapter
27	T-slot (Works for Anschutz & Freeland)